

Seats & Legs overview








General overview of the seats & legs



"feel free to take a seat!"



Overview of the available Seatings

				
Smartseat Easy Options: - ISO Fix - Reclining - Armrests	Smartseat Easy XL Options: - ISO Fix - Reclining - Armrests	Smartseat Tip & Fold Options: - ISO Fix Armrests included Seat turns sideways, seat cushion flips up	Smartseat Flip-Up Options: - ISO Fix - Reclining - Armrests Cushion flips up	Smartseat Bariatric Options: - ISO Fix - Armrests
				
Smartseat Easy RV Option: - ISO Fix - Armrests Backrest reclines completely forward	Smartseat Easy Care Option: - ISO Fix - Armrests Backrest reclines completely backward			

Our Smartseats are designed for business and pleasure with a focus on quality. Every step in manufacturing is carefully executed to create a comfortable and durable seat.

Our innovative Smartseats benefits:

- Aesthetically appealing
- Modular built, common components between the different seats
- Longer usable seatbelt length
- Integrated headrest
- Weight reduction, light weight
- Secure Plus – Seat Recognition available option
- Integral 3-point seat belt
- Grey and Black Standard Colors – Custom colors available upon request
- Tested and approved – UN/ECE R14, R16, R17, FMVSS/CMVSS 207,209,210,302



Specifications of the seats

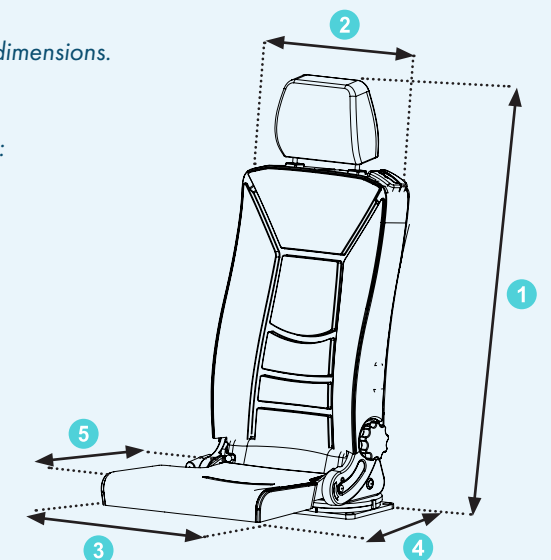
Smartseat Easy	Smartseat Easy XL	Smartseat Tip & Fold	Smartseat Flip-Up	Smartseat Bariatric
1. Height: 928	1. Height: 931	1. Height: 980	1. Height: 980	1. Height: 941
2. Backrest width: 416	2. Backrest width: 480	2. Backrest width: 416	2. Backrest width: 416	2. Backrest width: 654
3. Cushion width: 422	3. Cushion width: 482	3. Cushion width: 436	3. Cushion width: 436	3. Cushion width: 654
4. Depth: 642	4. Depth: 642	4. Depth: 570	4. Depth: 642	4. Depth: 574
5. Cushion depth: 456	5. Cushion depth: 456	5. Cushion depth: 375	5. Cushion depth: 365	5. Cushion depth: 460
Seat weight: 17Kg	Seat weight: 18Kg	Seat weight: 27Kg	Seat weight: 23Kg	Seat weight: 23,3Kg
Smartseat Easy RV	Smartseat Easy Care			
1. Height: 931	1. Height: 931			
2. Backrest width: 416	2. Backrest width: 416			
3. Cushion width: 422	3. Cushion width: 422			
4. Depth: 642	4. Depth: 642			
5. Cushion depth: 456	5. Cushion depth: 456			
Seat weight: 21 Kg	Seat weight: 21 Kg			

*All dimensions listed above are in millimeters.



The specifications on this page are based on the most compact seat dimensions. All indicated specification values are approximate.

See figure below on the right side with the 5 measurements indicated:



Example of a seat with 5 indicated specifications.

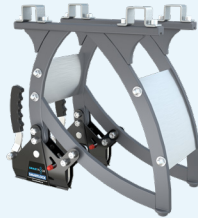
DISCLAIMER:

This brochure is not a substitute for the detailed technical drawings, but to give a general overview and first impression of the products. For more detailed information contact Smartfloor.

Overview of the available Seat Legs



*** Smartleg**
290 | 330 | 360 | 390 mm
7,6 | 8,0 | 8,5 | 9,8 Kg
Quick Release



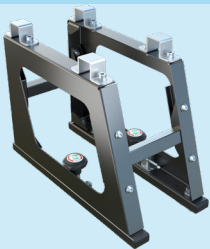
*** Smartleg Alu**
290 | 330 mm
5,0 | 5,6 Kg
Quick Release



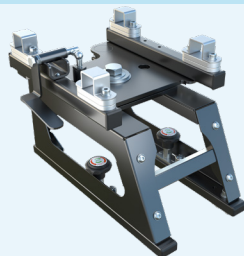
Millenium-Leg
235 | 280 | 335 mm
3,4 | 3,7 | 4,1 Kg
Quick Release



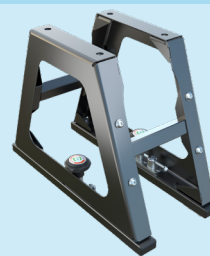
Fixed Leg
235 | 290 | 330 | 360 mm
4,5 | 4,9 | 5,1 | 5,4 Kg
**T-Nuts are required



Sliding V-Leg
290 | 320 mm
5,6 | 6,3 Kg



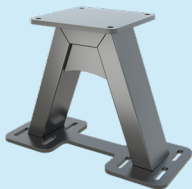
Sliding Rotating V-Leg
230 | 260 mm
13,4 | 14,2 Kg



Tip & Fold V-Leg
290 | 320 mm
5,0 | 5,2 Kg



*** Fixed Smartleg**
290 | 330 mm
7,2 | 8,0 Kg
**Lockables or T-Nuts are required



Single Seatleg Tip & Fold
270 | 320 | 350 mm
8,8 | 9,0 | 9,5 Kg
***T-Bolts are required



Single Seatleg Flip-Up
270 | 320 | 350 mm
9,3 | 9,8 | 10,0 Kg
***T-Bolts are required



Single Wheel Arch Frame
280 | 329 | 370 mm
10,6 | 11,0 | 13,0 Kg
***T-Bolts are required



Double Wheel Arch Frame
280 | 329 mm
20,6 | 22,6 Kg
***T-Bolts are required
(Not available for Fiat Ducato)



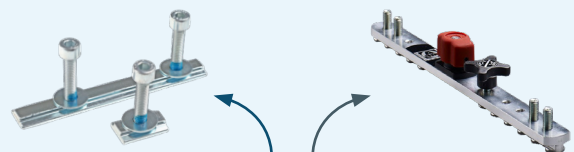
The indicated weights includes all the necessary hardware.
All weight values indicated are approximate.



Spacer plates + mounting kit are required for the legs with this indication *



T-Bolts are required for the legs with this indication ***



T-Nuts or Lockables are required for the legs with this indication **