

If constructed as stipulated in this manual, the setup will comply with all EU directives.  
 See TÜV report WE06134 for further details.

## FIXED SEAT-BELT ANCHOR POINTS WITH SEAT-BELT RETRACTION UNIT

Renault Master, without air-conditioning



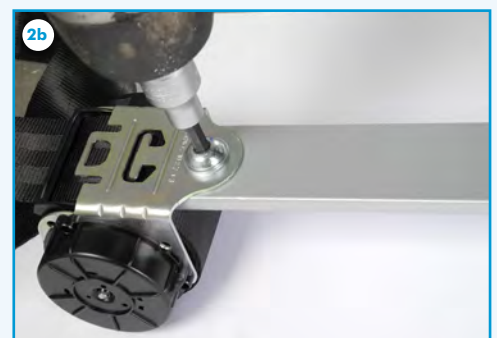
1) The positions of the seatbelt retractor and the upper belt point are free of choice along the indicated line for mounting. Make sure that the retractor and the upper belt point are as vertical as possible

Remove the side trim.  
 Remove the head lining.

Mounting of the seatbelt retractor



2b) Screw the retractor (C) with the hex bolt (D) in the metal strip.



3a) Use the metal strip to define the location of the hole for mounting the retractor into the vehicle.





4a) Drill two holes behind the vertical edge.



5a) Saw the metal between the two holes so you will end up with a long hole.



6a) Stick the metal strip (A) through the long hole.



6b) Screw the metal strip (A) with the counter sunk screw (B) M10x20 into the vehicle.

### Mounting the upper seatbelt point



7a) Drill a hole of 11 mm as straight as possible in a vertical line above the retractor. Drill the hole in the upper part of the body. Above a window or in the D column as shown in the picture.



8a) Use the upper seatbelt point mounting plate (E) for defining the holes for the rivets.





9a) Slide the upper seatbelt mounting plate (E) through an existing hole and line up the holes.



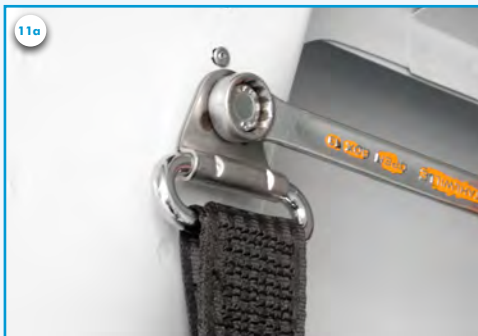
9b) Screw the bolt of the seatbelt anchorage point in the upper seatbelt mounting plate (E) so it won't fall down.



10a) Mount the upper seatbelt mounting plate (E) with the rivets.



10b) Remove the bolt of and mount the head lining. Use the distance spacers to overcome the space between the head lining and the body.



11a) Mount the upper seatbelt point with the 7/16" UNF 8.8 bolt. the upper seatbelt mounting plate.



11b) Place the upper seatbelt cover.

### Montage gordeltong



12a) To prevent swinging around of the seat belts a seatbelt tongue can be mounted in the body under the window.



12b) Drill two holes of 5.1 mm (H).



13a) Mount the seatbelt tongue with the rivets (I).

13b) If necessary the seatbelt tongue can be bend.

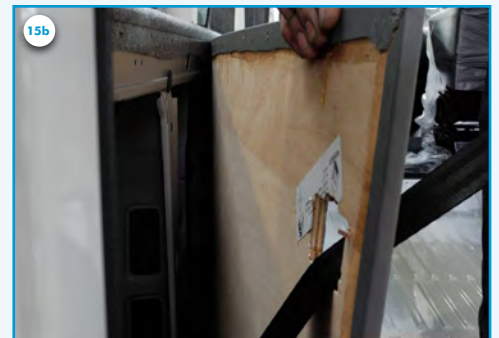


14a) Click the seatbelt onto the seatbelt tongue.

#### Mounting of the side trim

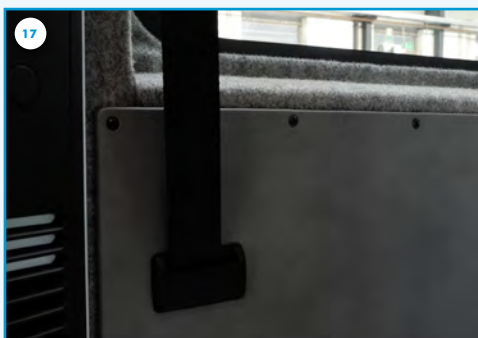


15b) Cut a hole in the side trim rectangular of 35 mm x 64 mm to create a hole where the seatbelt can go from behind the lining into the vehicle.



16a) Unscrew the upper seatbelt point. Put the upper seatbelt point through the hole in the side lining and mount it again.

16b) Mount the plastic covering (G) of the seatbelt.



17) Mount the side lining on the body.